

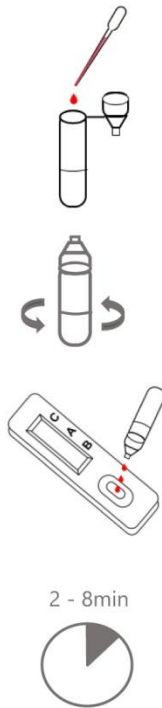
# Feline Blood Typing Kit

- **Low Sample Required:** Just 1 drop (10 $\mu$ L) of blood; Sample demand as low as 0.5  $\mu$ L
- **Rapid Detection:** 2 minutes
- **Operation Steps:** Simple and fast
- **Result Interpretation:** Intuitive and visual
- **Cassette Design:** Clean and tidy during use
- **High Accuracy:** >99.8%



## Usage Steps

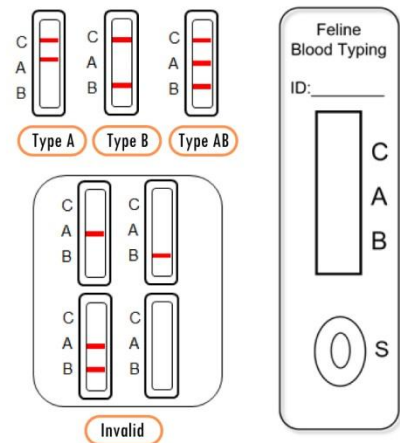
- Preparation**  
Bring the kit and test sample to room temperature. Mix anticoagulated whole blood sample thoroughly before use.
- Dilution**  
Draw up the sample using the provided dropper and add 1 drop (10 $\mu$ L) of sample into the sample diluent tube.
- Mixing**  
Cover the sample diluent tube and gently shake or invert to mix sample and diluent.
- Sample Drip Addition**  
Take out the test card and vertically add 3 drops of the mixed sample into the sample well (S).
- Interpretation**  
Wait 2-8 minutes after sample drip addition to read results.



## Use Scene

- Home testing
- Cattery
- Pet hospital

## Results Interpretation



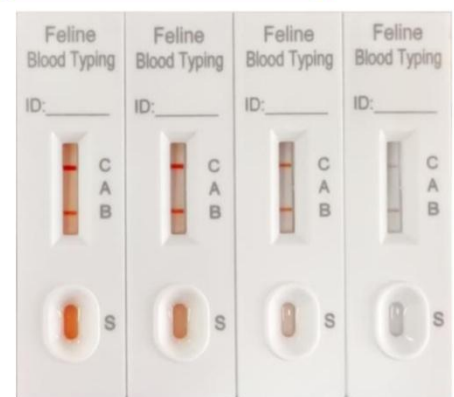
## Comparative Test Results

Standard

Ultra-Micro Blood Volume



## Actual Test Results



**Low Sample Required**

Ideal for non-professionals with limited blood test skills


Suitable for

- ✓ home testing
- ✓ uncooperative pets
- ✓ little sample demanded

**Extremely Little Blood? No Problem!**




 Xiamen Shengyou Biotechnology Co., Ltd.

 Add: Room 1102, No. 2076 Wengjiao West Road, Haicang District, Xiamen, China

 Tel: +86 592 5532270, +86 158 8059 6582 Email: chensy@xmkgangcui.com

# Canine Blood Typing Kit

- **Low Sample Required:** Just 1 drop (10 $\mu$ L) of blood;
- **Rapid Detection:** 10 minutes
- **Operation Steps:** Simple and fast
- **Result Interpretation:** Intuitive and visual
- **Cassette Design:** Clean and tidy during use
- **High Accuracy**



## Assay procedures

1

### Preparation

Allow all kit components and specimens to reach room temperature prior to testing.

2

### Dilution

Take out the sample diluent and open the Diluent cap. Add 1 drop (10 $\mu$ L) canine blood using the supplied micro dropper into sample diluent.

3

### Mixing

put on the Diluent cap, gently shake and mix well.

4

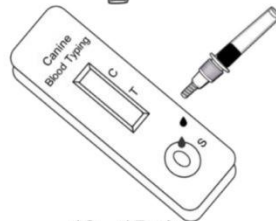
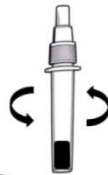
### Sample Drip Addition

Remove the test card from the foil pouch and place on a clean dry surface, open the dropper lid, add 2 drops of diluted sample into "S" well of the test card.

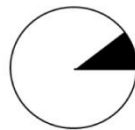
5

### Interpretation

Read the results at 10-15 minutes.



10 - 15min



## Application scenarios



Home test

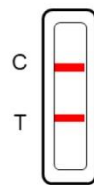


Kennel

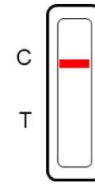


Pet hospital

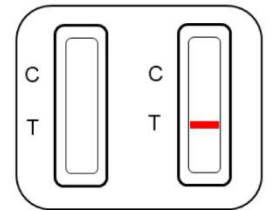
## Results Interpretation



DEA1  
Positive



DEA1  
Negative



Invalid

## Real specimen test results



# Bovine Pregnancy (PAGs) Test Kit



圣优生物  
Sheng You

## ➤➤ Clinical Significance

This colloidal gold immunochromatography (GICA) kit detects pregnancy-associated glycoproteins (PAGs) in serum/ plasma/ blood of bovine for early pregnancy diagnosis.

Traditional methods (rectal palpation / ultrasound) require 45~60 days post-breeding.

Our kit provides results at **28 days** with **96~99%** specificity.



## ➤➤ Benefit

No need of specialized equipment

No need of specialized training

Reduce bovine stress

Supplementary means for rectal palpation/ultrasound

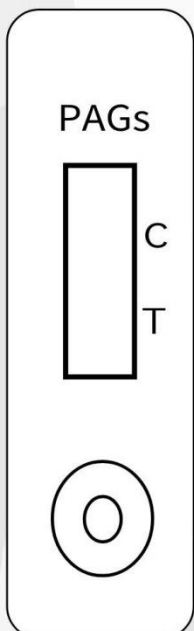
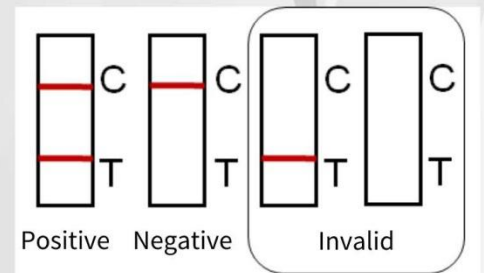
## ➤➤ Usage Steps

Sample Types: Serum / Plasma / Whole blood

- Sample:** Add 1 drop of sample to the test well (S).
- Diluent:** Add 2 drops of diluent.
- Results:** Read results after 15 min (invalid after 20 minutes).

## ➤➤ Results Interpretation

- Positive**  
Both test (T) and control (C) lines appear
- Negative**  
Only control line (C) appears
- Invalid**  
No control line (C)



# Pregnancy Relaxin

## Test Kit of Canine



**1 Drop**  
of blood/serum/plasma

**10-15min**  
get results

No More Guesswork

WHY US

 **Low cost**

*Preliminary screening  
before ultrasound*



**User-friendly**

*No specialized  
equipment needed*



**High sensitivity**

*Detects even pet with  
low hormone levels*



**Intuitive results**

*Colloidal Gold Technology  
Fast, Accurate*

### Usage Steps



**1. Sampling:**  
Add 1 drop of blood/  
serum / plasma to  
the sample well

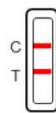


**2. Dilution:**  
Add 2 drops of  
diluent to the  
diluent Well

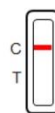


**3. Wait:**  
Observe results  
after 10~15 min

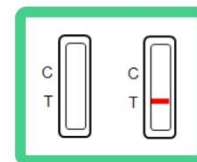
### Result Interpretation



Positive



Negative



Invalid



*Xiamen Shengyou Biotechnology Co., Ltd.*

*Add. : Room 1102, No. 2076 Wengjiao West Road, Haicang District, Xiamen, China*

*Tel: +86 592 5532270 , +86 158 8059 6582 WeChat: 15880596582 (Manager Chen)*



### Ultrasound



- Equipment/expertise needed
- Expensive
- Have to take pets out

### Relaxin



#### Shengyou Canine Pregnancy Relaxin Test Kit

- Simple operation
- Low cost
- Test anywhere
- Show results in 10~15 min
- Just 1 drop of blood needed
- A rapid preliminary screening method before ultrasound examination

### Prog/Estrogen



- The pet continuously produces Prog during the estrus period. It is difficult to distinguish whether pregnant or not
- Affected by endocrine disorders
- Influenced by environment / individual variations

# Choose Shengyou! Test Anywhere with Ease!

## WHY TEST ?

### Avoid uncertain waiting

*Detect as early as 21~25 days (canine) post-breeding.*

Note: Retest after 1 week if initial result is negative (possible due to early testing or delayed relaxin secretion).

### Breeding management

Optimize breeding plan for catteries/kennels.

### Pet owners

Prepare nutrition/delivery room in advance.

### Animal rescue

Efficiently identify pregnant strays for resource allocation.



Xiamen Shengyou Biotechnology Co., Ltd.

Add. : Room 1102, No. 2076 Wengjiao West Road, Haicang District, Xiamen, China

Tel: +86 592 5532270 , +86 158 8059 6582 WeChat: 15880596582 (Manager Chen)



# Feline Pregnancy Relaxin Test Kit

- **Low Sample Required:** Just 1 drop (10 $\mu$ L) of blood;
- **Rapid Detection:** 10 minutes
- **Operation Steps:** Simple and fast
- **Result Interpretation:** Intuitive and visual
- **Cassette Design:** Clean and tidy during use
- **Early detection:** Detectable 20–25 days after conception.



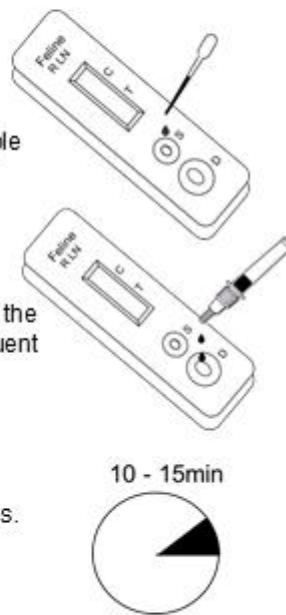
## Assay procedures

**1 Preparation**  
Equilibrate the kit and test samples to room temperature. Mix anticoagulated whole blood thoroughly before use

**2 Sample Loading**  
Add 1 drop (10  $\mu$ L) of serum/plasma/whole blood sample into the sample well (well S)

**3 Add Diluent**  
Remove the dropper cap of the diluent, and add 2 drops of diluent into the diluent well (well D)

**4 Interpretation**  
Read the results at 10-15 minutes.



## Application scenarios



Home test

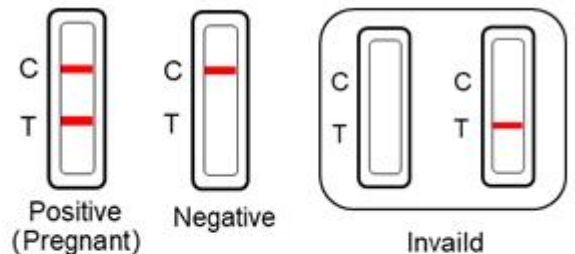


Kennel



Pet hospital

## Results Interpretation



## Real specimen test results

